

IMPACT CYLINDERS

M/3000 Double Acting – Ø 2 ... 6"

- High energy output
- Ideally suited to a wide range of marking, piercing and light presswork applications
- Rugged, corrosion-resistant construction

Technical Data

Operating pressure:
2,7 ... 10 bar

Ambient temperature:
-20°C ... +80°C

Air supply must be dry enough to avoid ice formation at temperatures below +2°C

Mounting position:
Vertical

For all applications complete guarding must be incorporated, either fixed or interlocked with the control circuit. For further information consult IMI Precision Engineering technical sales. An Impact Cylinder gives an output rated in energy i.e. thrust x distance. This energy is achieved by rapidly accelerating the piston rod and tool assembly over a free stroke of approximately 65 mm, before contacting the work. The rapid acceleration is produced by the differential area arrangement which quickly exposes the full area of the piston to high pressure air built up in the reservoir at rear end of the cylinder.

Materials

Rear end cover:
Aluminium

Front end cover:
Aluminium or steel

Piston:
Steel

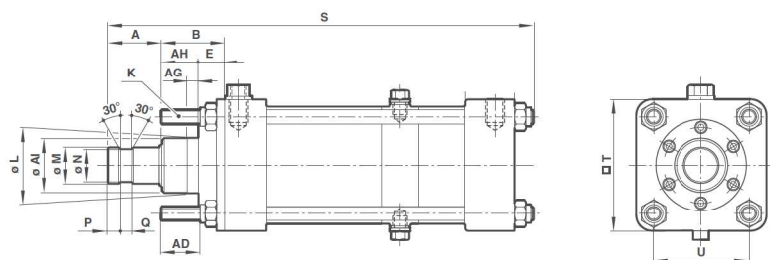
Piston rod:
Hardened steel

Centre piece:
Aluminium or steel

Seals:
NBR




Dimensions



Dia. Ø	A	AD	AG	AH	Ø AI	B	E	K	Ø L	Ø M	Ø N	P	Q	S	T	U
2"	37,5	17	8	20,5	31,5	35	14,3	M 8	31,72/31,67	20	17,5	9,5	6	461	63,5	48
3"	37,5	27,5	8	25,5	37,5	38	12,7	M 10	38,07/38,02	25	23	9	8	506	89	67
4"	44,5	34,5	8	31,5	44	44,5	12,7	M 11	44,42/44,37	32	28,5	11	9,5	516	114	89
6"	63,5	48	9,5	35	69,5	68	15,9	M 16	69,82/69,75	44,5	40,5	19	12,5	587	167	129

Models

Model	Dia. Ø	Energy joules at 5,5 bar	Max. Cycle rate/min	Max. tool weight to be carried	Port size	Piston rod dia. Ø	Straight fitting	Elbow fitting	Service kit	
	M/3020M	2"	24,5	60	3,6kg	G1/4	20	C02250628	C02470628	QM/3020/00
M/3030M	3"	63	50	9,0kg	G3/8	25	C02250838	C02470838	QM/3030/00	
M/3040M	4"	125,5	40	15,8kg	G3/8	32	C02251038	C02471038	QM/3040/00	
M/3060	6"	253	35	36,2kg	G1/2	44,5	C02251248	C02471248	QM/3060/00	

Accessories



For alternative fitting types, shapes or sizes, refer to our fittings section.

Mountings



Dia. Ø	B, G
2"	QM/871
3"	QM/984
4"	QM/987
6"	QM/990