

- > **Port size: 1/4" or 3/8" (ISO G/PTF)**
- > **Excelon design allows in-line installation or modular installation with other Excelon products**
- > **High efficiency water and particle removal**
- > **Quick release bayonet bowl**
- > **Push to lock adjusting knob with tamper resistant accessory**
- > **Metal bowl with prismatic liquid level indicator lens**



Technical features

Medium:

Compressed air only

Maximum operating pressure:

10 bar (145 psi)

Pressure range:

0,3 ... 10 bar (4 ... 145 psi)

0,3 ... 4 bar (4 ... 58 psi) optional,

0,3 ... 2 bar (4 ... 29 psi) optional

Filter element:

40 µm and 5 µm

Port size:

G1/4, G3/8, 1/4 or 3/8 NPT

Gauge port:

Rc 1/8 with ISO G main ports

1/8 PTF with PTF main ports

Flow:

38 dm³/s maximum

At port size: 1/4"

Inlet pressure 10 bar (145 psi);

6,3 bar (91 psi) set pressure and a

Δp: 1 bar (14,5 psi) droop from set.

Relieving:

Standard

Drain:

Manual, automatic or semi-automatic

Automatic drain operating conditions (float operated):

Bowl pressure required to close drain: > 0,35 bar (5 psi)

Bowl pressure required to open drain: ≤ 0,2 bar (2.9 psi)

Minimum air flow required to close drain: 0,1 m³/s (0.2 scfm)

Manual operation: depress pin inside drain outlet to drain bowl

Semi automatic drain operating conditions (pressure operated):

Bowl pressure required to close drain: Greater than 0,1 bar (1.5 psig)

Bowl pressure required to open drain: Less than 0,1 bar (1.5 psig)

Minimum air flow required to close drain: 0,5 dm³/s (1 scfm)

Ambient/Media temperature:

Transparent bowl:

-34 ... +50°C (-29 ... +122°F)

Metal bowl:

-34 ... +65°C (-29 ... +149°F)

Air supply must be dry enough to avoid ice formation at temperatures below +2°C (+35°F).

Materials:

Body: Zinc

Bonnet: Acetal

Valve: PP and TPV

Transparent bowl: PC

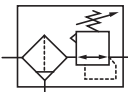
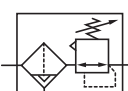
Metal bowl: Zinc

Liquid level indicator lens (metal bowl): transparent PA

Filter element: sintered PP

Elastomers: CR & NBR

Technical data B72G - standard models

Symbol	Port size	Size	Drain	Pressure range		Filter element (µm)	Adjustment	Bowl	Weight (kg)	Model
				(bar)	(psi)					
	G1/4	Basic	Manual	0,3 ... 10	4 ... 145	40	Knob	PC (transparent)	0,52	B72G-2GK-QT3-RMN
	G3/8	—	Manual	0,3 ... 10	4 ... 145	40	Knob	PC (transparent)	0,52	B72G-3GK-QT3-RMN
	G1/4	Basic	Manual	0,3 ... 10	4 ... 145	5	Knob	PC (transparent)	0,52	B72G-2GK-QT1-RMN
	G3/8	—	Manual	0,3 ... 10	4 ... 145	5	Knob	PC (transparent)	0,52	B72G-3GK-QT1-RMN
	G1/4	Basic	Automatic	0,3 ... 10	4 ... 145	40	Knob	PC (transparent)	0,52	B72G-2GK-AL3-RMN
	G3/8	—	Automatic	0,3 ... 10	4 ... 145	40	Knob	PC (transparent)	0,52	B72G-3GK-AL3-RMN
	G1/4	Basic	Automatic	0,3 ... 10	4 ... 145	5	Knob	PC (transparent)	0,52	B72G-2GK-AL1-RMN
	G3/8	—	Automatic	0,3 ... 10	4 ... 145	5	Knob	PC (transparent)	0,52	B72G-3GK-AL1-RMN

Option selector

B72G-★K-★-★-★-★

Port size	Substitute
1/4"	2
3/8"	3
Thread form	Substitute
PTF	A
ISO G parallel (standard)	G
Drain	Substitute
Manual (standard)	Q
Semi automatic	S
Auto drain (standard) *1)	A
Bowl	Substitute
Transparent without guard (Standard)	T
Metal with liquid indicator	D
Long metal with liquid indicator (automatic drain)	E
Long transparent (automatic drain)	L
Long transparent with guard	W

Gauge	Substitute
Without (standard)	N
With	G
Pressure range *2)	Substitute
0,3 ... 10 bar (standard)	M
0,3 ... 4 bar	F
0,3 ... 2 bar	C
Diaphragm	Substitute
Relieving (standard)	R
Non relieving	N
Element	Substitute
40 µm (standard)	3
5 µm (standard)	1

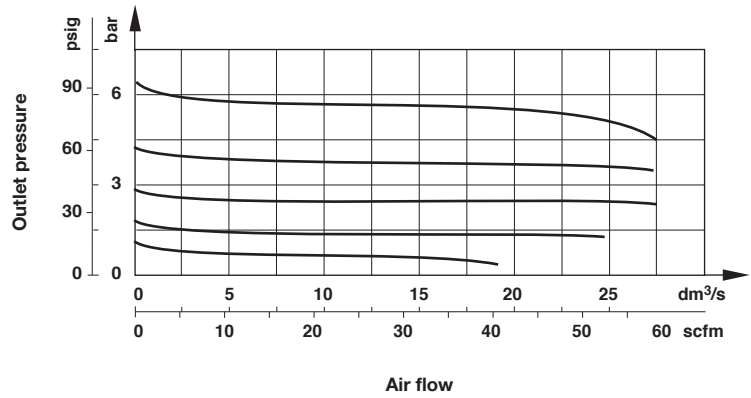
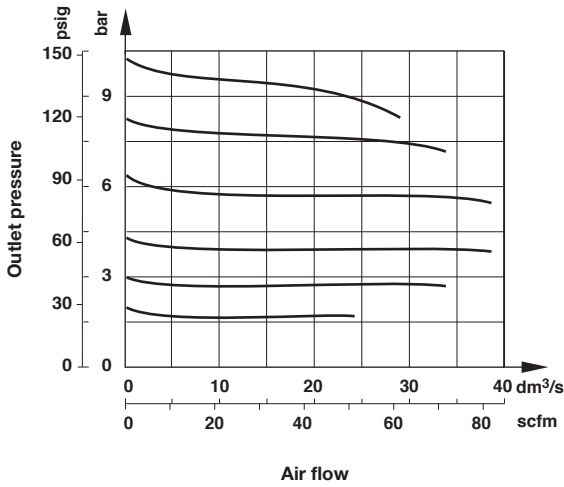
*2) Outlet pressure can be adjusted to pressures in excess of, and less than, those specified. Do not use these units to control pressures outside of the specified ranges.

*1) Supplied in long bowl options only.


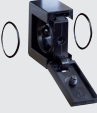








Flow characteristics

Inlet pressure: 10 bar (145 psi)
Port size: 1/4", 40 µm element

Inlet pressure: 7 bar (101 psi)
Port size: 1/4", 40 µm element





Accessories


<p>Universal mounting bracket</p>  <p>Page 4</p> <p>4224-50</p>	<p>Quikclamp®</p>  <p>Page 3</p> <p>4214-51</p>	<p>Quikclamp® with wall bracket</p>  <p>Page 3</p> <p>4214-52</p>	<p>Neck mounting bracket</p>  <p>Page 4</p> <p>74316-50</p>	<p>Panel nut</p>  <p>4248-89</p>
<p>Tamper resistant kit</p>  <p>4255-51</p>	<p>Quikmount pipe adaptor *1)</p>  <p>Page 3</p> <p>G1/4: 4215-08 G3/8: 4215-09 1/4 PTF: 4215-02 3/8 PTF: 4215-03</p>	<p>Porting block with three alternative 1/4" ports</p>  <p>Page 3</p> <p>G1/4: 4216-52 1/4 PTF: 4216-50</p>	<p>2/2 Shut-off valves (for full technical specification see datasheet 8.160.600)</p>  <p>Page 4</p> <p>G1/4: T72B-2GA-P1N G3/8: T72B-3GA-P1N 1/4 PTF: T72B-2AA-P1N 3/8 PTF: T72B-3AA-P1N</p>	<p>3/2 Shut-off valves (for full technical specification see datasheet 8.160.600)</p>  <p>Page 4</p> <p>G1/4: T72T-2GA-P1N G3/8: T72T-3GA-P1N 1/4 PTF: T72T-2AA-P1N 3/8 PTF: T72T-3AA-P1N</p>

*1) Please use a Quikmount pipe adaptor if the Quikclamp® be mounted at inlet or outlet side.

Pressure switch

<p>Porting block for pressure switch</p>  <p>0523109000000000</p>	<p>Pressure switch (0,5 ... 8 bar)</p>  <p>0881300000000000</p>
---	---

Padlock

<p>Padlock (brass) with two keys *1)</p>  <p>0613633000000000</p>


*1) For shut-off valves and tamper resistant kit.

Service kit

<p>Element</p>	<p>Service kit for auto drain</p> 	<p>Service kit for manual drain</p> 	
	<p>40 µm</p>	<p>B72G-KITA40R</p>	<p>B72G-KITM40R</p>
	<p>5 µm</p>	<p>B72G-KITA05R</p>	<p>B72G-KITM05R</p>

Gauge


Center back connection, white face (for full technical specification see datasheet 8.900.900)



Pressure range				Thread size	Model
bar *1	Mpa	psi	∅		
0 ... 2,5	—	0 ... 36	40 mm	R1/8	18-015-886
0 ... 4	0 ... 0,4	0 ... 58	40 mm	R1/8	18-015-990
0 ... 10	0 ... 1	0 ... 145	40 mm	R1/8	18-015-989

*1) primary scale

Center back connection, black face for North America (for full technical specification see datasheet 8.900.900)

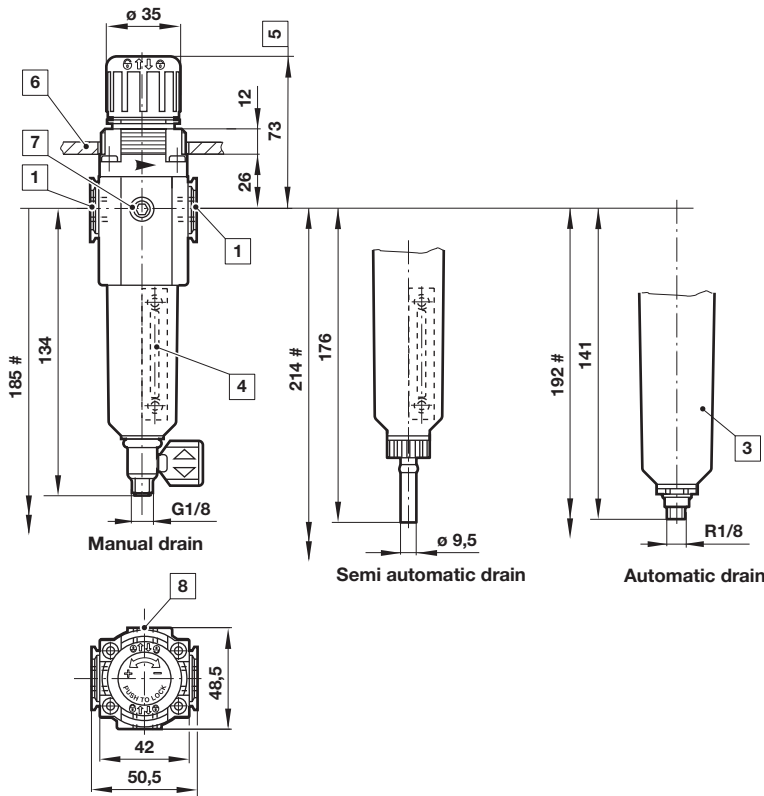


Pressure range				Thread size	Model
psig *1	bar	Mpa	∅		
0 ... 30	0 ... 2	0 ... 0.2	1.5" (40 mm)	1/8 NPT	18-015-214
0 ... 60	0 ... 4	0 ... 0.4	1.5" (40 mm)	1/8 NPT	18-015-211
0 ... 160	0 ... 11	0 ... 1.1	1.5" (40 mm)	1/8 NPT	18-015-212

*1) primary scale

Dimensions

Dimensions in mm
 Projection/First angle



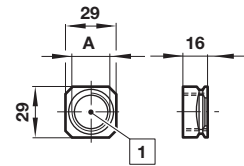
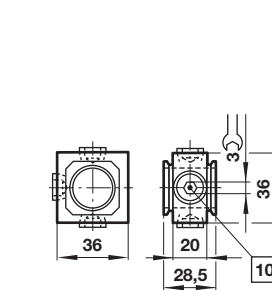
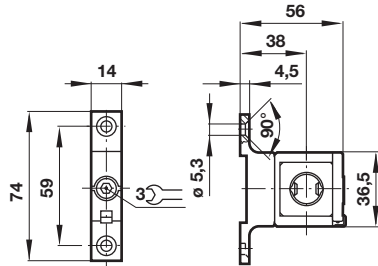
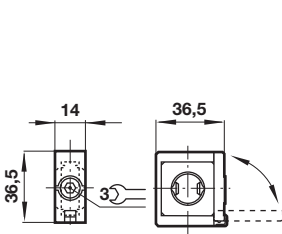
- # Minimum clearance required to remove bowl
- 1 Main ports 1/4" or 3/8"
 - 3 Transparent bowl
 - 4 Metal bowl with liquid indicator
 - 5 Reduces by 4 mm with knob in locked position
 - 6 Panel hole \varnothing 40 mm, Panel thickness 4 max.
 - 7 Gauge port 1/8"
 - 8 Alternative gauge port 1/8" plugged

Accessories
Quikclamp®

Quikclamp® with wall bracket

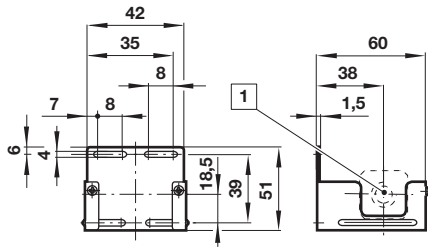
Porting block

Pipe adapter

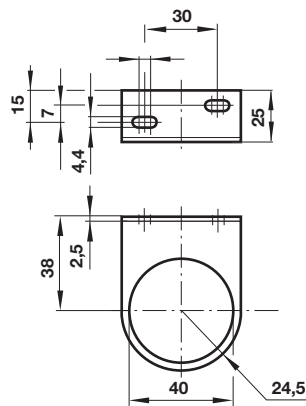


10 Ports 1/4 (ISO G/NPT) plugged

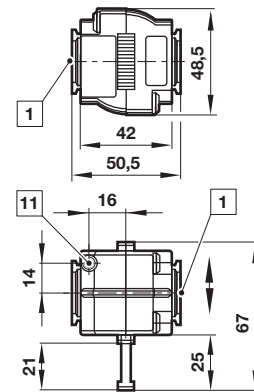
1 Main ports 1/4" or 3/8" (ISO G/PTF)

Wall mounting bracket


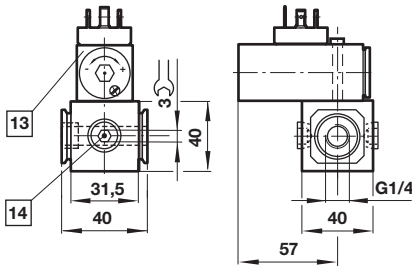
1 Main ports

Neck mounting bracket

Shut-off valves

Dimensions in mm
Projection/First angle



1 Main ports 1/4" or 3/8" (ISO G/PTF)
 11 Exhaust port M5 at 3/2 valve only

Porting block for pressure switch


13 Pressure switch is not in scope of delivery
 14 Alternative G1/4 ports plugged

Warning

These products are intended for use in industrial compressed air systems only. Do not use these products where pressures and temperatures can exceed those listed under »**Technical features/data**«.

Before using these products with fluids other than those specified, for non-industrial applications, life-support systems or other applications not within published specifications, consult IMI Precision Engineering, Norgren Inc.

Through misuse, age, or malfunction, components used in fluid power systems can fail in various modes. The system designer is warned to consider the failure modes of all component parts used in fluid power systems and to provide adequate safeguards to prevent personal injury or damage to equipment in the event of such failure.

System designers must provide a warning to end users in the system instructional manual if protection against a failure mode cannot be adequately provided.

System designers and end users are cautioned to review specific warnings found in instruction sheets packed and shipped with these products.