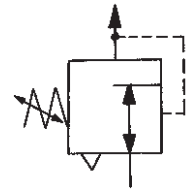


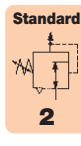
"Mano" Pressure Regulator with 270° Adjustment Dial

R11 - R41

Description	Piston-operated regulator with balanced valve design and high-relief flow. Features include a transparent pressure-calibrated, non-rising adjusting dial which can be mounted in any position so the dial face is always visible. Pressure setting in steps is possible.				
Handwheel	The full secondary pressure range can be dialed in less than a 270° turn proportional to handwheel with scale in bar or psi. This is advantageous if secondary pressure must be changed frequently.				
Supply pressure	max. 21 bar min. 1 bar over outlet pressure				
Constant bleed	bleed rate 1.4 l/min at 7 bar inlet and 6 bar outlet pressure				
Gauge port	G1/4 on both sides of the body				
Temperature range	0 °C to 80 °C / 32 °F to 175 °F -20 °C to 100 °C / -4 °F to 212 °F				
Materials	Body: zinc	Bonnet: zinc and brass	Valve assembly: brass, NBR, acetal	Spring: steel	
	Seals: NBR / nitrile	Piston: acetal			



fast adjustment
pilot-regulated G¹/₄ to G2



Dimensions			K _v -value (m ³ /h)	Flow rate		Pressure range bar	Connection thread G	Order number
B mm	H mm	C mm		m ³ /h*	l/min*			

"Mano" regulator			air consumption 1.4 l/min supply max. 21 bar	adjusting dial 270° turn wheel	R11-R41			
74	68	68	0.02	1.2	20	0... 3 0... 11	G ¹ / ₄	R11-C2-L R11-C2-O
104	82	68	2.5	180	3000	0... 3 0... 11	G ¹ / ₄	R21-C2-L R21-C2-O
104	82	68	2.5	270	4500	0... 3 0... 11	G ³ / ₈	R21-C3-L R21-C3-O
104	82	68	2.5	300	5000	0... 3 0... 11	G ¹ / ₂	R21-C4-L R21-C4-O
132	110	68	6.7	480	8000	0... 3 0... 11	G ³ / ₄	R31-C6-L R31-C6-O
132	110	68	6.7	540	9000	0... 3 0... 11	G 1	R31-C8-L R31-C8-O
174	136	91	18.5	1320	22000	0... 3 0... 11	G 1 ¹ / ₂	R41-CB-L R41-CB-O
174	136	91	20.0	1440	24000	0... 3 0... 11	G 2	R41-CC-L R41-CC-O



R21

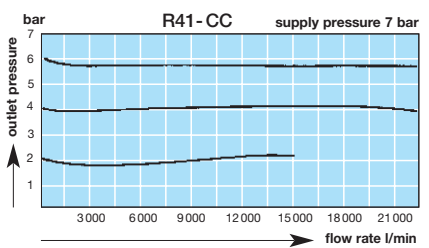
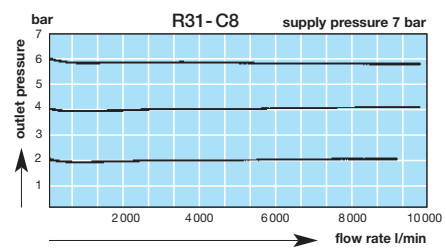
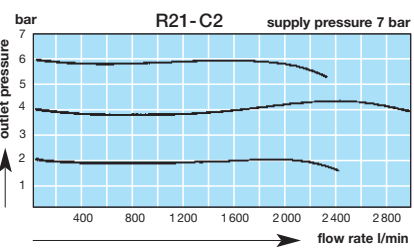
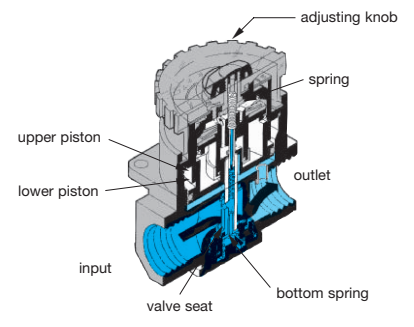
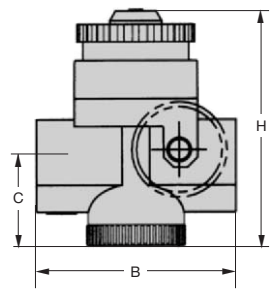
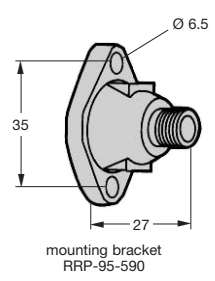
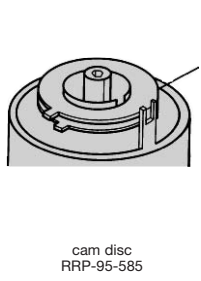


R31-C6



R41-CB

Special options	add the appropriate letter (only for R21 ... R41)			Accessories	
pressure gauge	Ø 50, G ¹ / ₄	loose	G	R. 1 - C. - . G	
tamper-proof	RRP-95-585		T	R. 1 - C. - . T	
mounting bracket	RRP-95-590	loose	X	R. 1 - C. - . X	



* at 7 bar supply pressure, 6 bar outlet pressure

For your information:	1 bar: 14.5 psi	1 l/min: 0.035 scfm	1 mm: 0.039 inch	Pressure gauge: Please consult chapter "Gauges"
	1 psi: 0.069 bar	1 scfm: 28.3 l/min	1 inch: 25.4 mm	

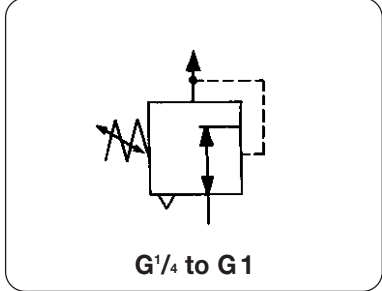
Order example:
R31-C8-O

"Maxi" Pressure Regulator

R20



Description	High-capacity regulator of modular design with exchangeable inserts.		
Adjustment	Plastic knob, tamper-proof, snap-lock, removable, T-handle with counter nut as option.		
Pressure range	0.2 to 1.8 bar, 3 to 25 psi,	0.2 to 4 bar, 3 to 60 psi,	0.3 to 9 bar, 4 to 125 psi, 0.5 to 17 bar 7 to 250 psi
Supply pressure	max. 21 bar / 300 psi		
Relieving	standard, non-relieving as option		
Gauge port	1/2" on both sides of the body		
Temperature range	-30 °C to 70 °C / -22 °F to 150 °F		
Materials	Body: zinc Spring cage: zinc	Knob: acetal Piston: Celcon	Inner valve: brass O-ring: NBR (Buna N)

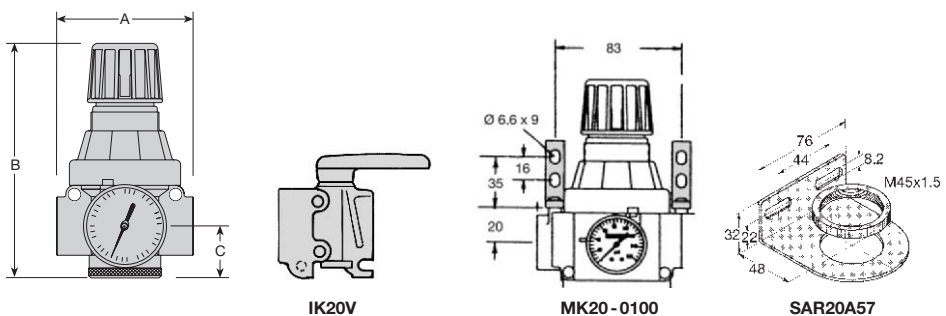


Dimensions			K _v -value (m ³ /h)	Flow rate m ³ /h* l/min*	Connection thread G	Pressure range bar	Order number
H mm	B mm	C mm					

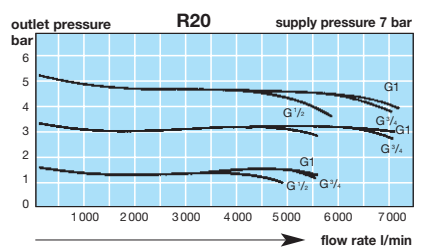
"Maxi" pressure regulator							supply max. 21 bar, relieving adjusting knob with snap-lock	R20
89	162	38	3.3	240	4000	G ^{1/4}	0.2... 1.8 0.2... 4 0.3... 9 0.5... 17	R20-02A R20-02B R20-02C R20-02D
89	162	38	4.2	300	5000	G ^{3/8}	0.2... 1.8 0.2... 4 0.3... 9 0.5... 17	R20-03A R20-03B R20-03C R20-03D
89	162	38	5.2	370	6200	G ^{1/2}	0.2... 1.8 0.2... 4 0.3... 9 0.5... 17	R20-04A R20-04B R20-04C R20-04D
111	162	38	6.0	430	7200	G ^{3/4}	0.2... 1.8 0.2... 4 0.3... 9 0.5... 17	R20-06A R20-06B R20-06C R20-06D
111	162	38	6.3	450	7500	G1	0.2... 1.8 0.2... 4 0.3... 9 0.5... 17	R20-08A R20-08B R20-08C R20-08D



Special options	add the appropriate letter	Accessories
T-handle	including counter nut	1 R21-0..
pressure gauge	Ø63, G ^{1/4} , loose	G R20-0..G
non-relieving		K R20-0..K
NPT thread		N R20-0..N
plastic nut	R10X51	P R20-0..P
aluminium nut	R10X51A	Q R20-0..Q
mounting bracket	SAR20A57 fixed on spring cage	X R20-0..X
set of brackets	MK20-0100 fixed on side of thread	Y R20-0..Y
insert kit	bolt + O-ring G ^{1/4} IK20Y,	G ^{3/8} IK20X
	bolt + O-ring G ^{1/2} IK20A,	G ^{3/4} IK20B
	bolt + O-ring	G1 IK20C
combination kit	connection of two units	IK20CC
porting block	G ^{1/4} , for unlubricated air	IK20CP
shut-off valve	3-way lockable	IK20V



* at 7 bar supply pressure and 6 bar outlet pressure



For your information:	1 bar: 14.5 psi 1 psi: 0.069 bar	1 l/min: 0.035 scfm 1 scfm: 28.3 l/min	1 mm: 0.039 inch 1 inch: 25.4 mm	Pressure gauge: Please consult chapter "Gauges"
------------------------------	-------------------------------------	-------------------------------------------	-------------------------------------	----------------------------------------------------

Order example:
R20-06C

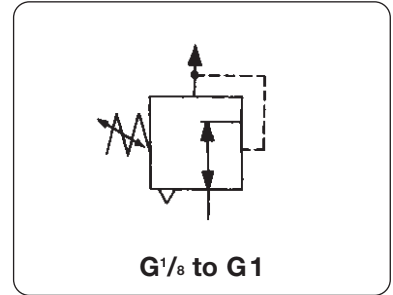
Plastic Pressure Regulator

R0

Standard



Description	Modular regulator easy to combine with other regulators, filters or filter regulators of the same series, without the need for double nipples or any other fittings. A sensitive convoluted diaphragm allows good pressure regulation.		
Supply pressure	max. 13 bar	R035:	max. 10 bar
Outlet pressure	0 ... 4 bar, 0 ... 8 bar, 0 ... 12 bar	R035:	0 ... 6 bar
Adjustment	plastic knob, tamper-proof, snap-lock, removable R035 without snap-lock	red knob:	relieving
		black knob:	non-relieving
Relieving	as standard non-relieving for liquids as option		
Gauge port	G ¹ / ₈ on both sides of the body	G ¹ / ₄ only on regulator R095	
Temperature range	0 °C to 50 °C / 32 °F to 120 °F media and ambient -20 °C to 90 °C / -4 °F to 190 °F storage		
Materials	Body: nylon series 035 / 042: POM Diaphragm: NBR	Inner valve: brass Thread insert: brass	

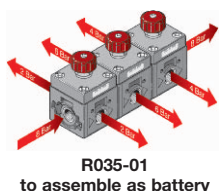
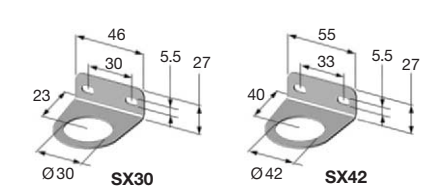
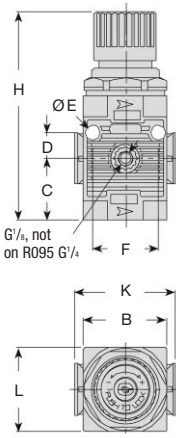


Dimensions			Flow rate		Connection thread	Pressure range	Order Number
B	H	C	m ³ /h*	l/min*	G	bar	

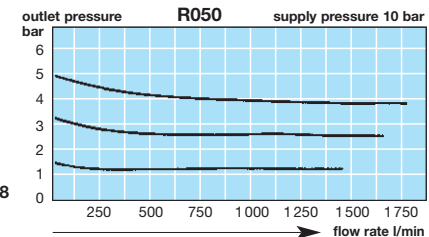
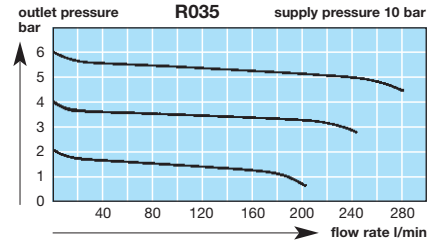
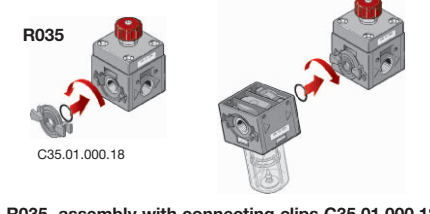
Pressure regulator		supply max. 13 bar, R035 max. 10 bar,	relieving without gauge	R0	
36	61 12	15	250	G ¹ / ₈ 0... 6 bar 0... 6 bar 0... 6 bar	R035 - 01B R035 - 01BR R035 - 01J
42	92 20	51	850	G ¹ / ₄ 0... 4 bar 0... 8 bar 0... 12 bar	R042 - 02B R042 - 02C R042 - 02D
63	129 38	84	1400	G ³ / ₈ 0... 4 bar 0... 8 bar 0... 12 bar	R050 - 03B R050 - 03C R050 - 03D
63	129 38	90	1500	G ¹ / ₂ 0... 4 bar 0... 8 bar 0... 12 bar	R052 - 04B R052 - 04C R052 - 04D
75	145 42	138	2300	G ¹ / ₂ 0... 4 bar 0... 8 bar 0... 12 bar	R075 - 04B R075 - 04C R075 - 04D
137	145 42	144	2400	G ³ / ₄ 0... 4 bar 0... 8 bar 0... 12 bar	R080 - 06B R080 - 06C R080 - 06D
115	222 48	900	15000	G1 0... 4 bar 0... 8 bar 0... 12 bar	R095 - 08B R095 - 08C R095 - 08D



Special options	add the appropriate letter		Accessories
pressure gauge	Ø40 for R042	Ø50 for R050/080	G R0...-0...G
pressure gauge	Ø23 for R035	Ø63 for R095	G R0...-0...G
non-relieving	for water		K R0...-0...K
mounting bracket	SX30 M30x1.5	for R042	X R042-02.X
mounting bracket	SX42 M42x2	for R050/080	X R0...-0...X
wall mounting	C42.05.000.01	for R042	Y R042-02.Y
wall mounting	C95.01.000.15/18	for R095	Y R095-08.Y
connecting clips	C35.01.000.18	for R035	Z R035-01.Z



Series	D	E	F	K	L
R035	8	3.5	20	-	36
R042	10.5	4.5	31	-	42
R050/52	16	5.5	41	63	52
R075	17.5	5.5	45	75	63
R080	17.5	5.5	45	-	63
R095	65	8.5	174	115	95



* at 10 bar supply pressure, 7 bar outlet pressure and 1 bar pressure drop

For your information:	1 bar: 14.5 psi	1 l/min: 0.035 scfm	1 mm: 0.039 inch
	1 psi: 0.069 bar	1 scfm: 28.3 l/min	1 inch: 25.4 mm

Order example: R042-02C