

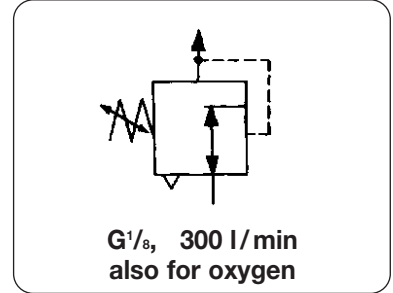
Precision Pressure Regulator without constant bleed

R309

Miniature



Description	Precision pressure regulator with high precision inner valve and sensitive convoluted diaphragm. Of proven reliability and durability and designed for precise pressure regulation in the event of disturbances in flow, supply pressure or temperature. With very high capacity relief valve.				
Flow capacity	300 l/min / 10 scfm	K_v-value :	0.17 (m ³ /h)		
Supply pressure	max. 10 bar	Air consumption:	none		
Gauge port	not available	Exhaust capacity:	100 l/min at 0.3 bar above setpoint		
Temperature range	-10 °C to 60 °C / 14 °F to 140 °F				
Materials	Body: brass	Inner valve: brass	Elastomer: NBR / Buna N		



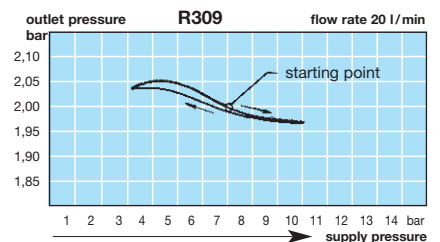
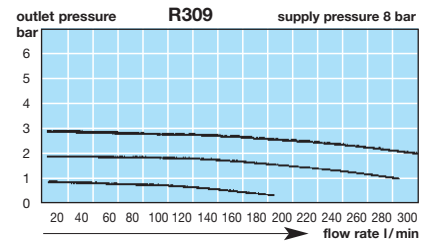
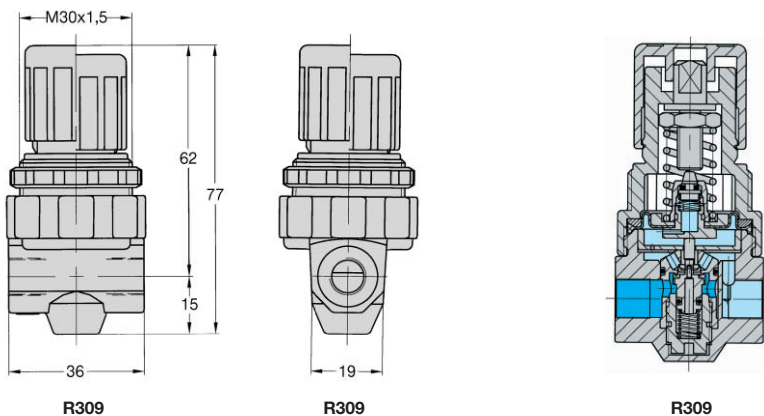
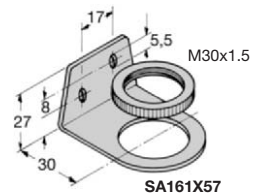
Dimensions			Supply pressure	Flow rate	Connection thread	Pressure range	Order number
H	W	D	bar	l/min*	G	bar	
mm	mm	mm					

Precision pressure regulator relieving, without constant bleed							K _v -value: 0.17 (m ³ /h), brass body	R309
77	36	34	10	300	G ¹ / ₈	0... 1	R309-01A	
						0... 3	R309-01B	
						0... 6	R309-01C	
						0... 10	R309-01D	



R309

Special options add the appropriate letter				Accessories
mounting bracket	SA161X57	plastic nut included	X	R309-01.X
plastic nut	R05X51	M30x1.5	P	R309-01.P
aluminium nut	R05X51A	M30x1.5	Q	R309-01.Q
brass nut	SM-R309	M30x1.5	M	R309-01.M



* at 8 bar supply pressure and 3 bar outlet pressure

For your information:	1 bar: 14.5 psi	1 l/min: 0.035 scfm	1 mm: 0.039 inch
	1 psi: 0.069 bar	1 scfm: 28.3 l/min	1 inch: 25.4 mm

Order example:
R309-01B

Description

High pressure miniature regulator for all gases, corrosive or non-corrosive (RH0) and liquids (RH1) compatible with materials of construction: aluminium, brass or stainless steel. Non-relieving. max. 150% of operating pressure. Burst pressure max. 400% of operating pressure

Proof pressure

1/4" NPT for inlet and outlet pressure

Gauge port

Media

All gases, corrosive or non-corrosive

Flow rate

0.05 m³/h

Leak rate

2x10⁻⁸ mbar l/s He, internal volume 3cc

Operating temperature

-40 °C to 60 °C / -40 °F to 140 °F

Operating system

diaphragm of stainless steel 316 SST

Material:

Body 316 SST, brass or aluminium as option
Seat Teflon PFA or PCTFE as option
Inner valve 316 SST or brass on brass model

RH1

all gases or liquids compatible with materials of constr.

Flow rate

0.05 m³/h

Leak rate

bubble-tight, 0.1 ml/min

Operating temperature

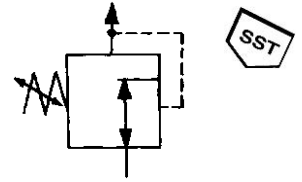
-20 °C to 70 °C / -4 °F to 160 °F

Operating system

piston with EPDM seal, as option NBR or FKM

Material:

aluminium 6061, nickel-plated
 PCTFE or Vespel as option
 300 SST and aluminium



supply max. 241 / 414 bar
 outlet 0 ... 2 / 122 bar



Dimensions	Gauge ports	K _v -value	Pressure range	Order number
height mm	Ø mm	2 x 1/4" NPT	m³/h bar	

Regulator 241 bar		1/4" NPT brass body,	for gases, diaphragm 316 SST,	non-relieving Teflon	RH0
82	41	P _S and P _O	0.05	0.2 ... 2 bar	RH0-02A
				0.4 ... 4 bar	RH0-02B
				0.6 ... 7 bar	RH0-02C



RH0

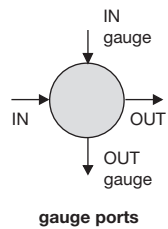
Regulator 414 bar		1/4" NPT, aluminium body,	for gases and liquids, piston with EPDM,	non-relieving Teflon	RH1
76	46	P _S and P _O	0.05	0.5 ... 5 bar	RH1-02A
				0.5 ... 9 bar	RH1-02B
				1.5 ... 15 bar	RH1-02C
76	46	P _S and P _O	0.05	4 ... 47 bar	RH1-02D
				8 ... 81 bar	RH1-02E
				10 ... 122 bar	RH1-02F



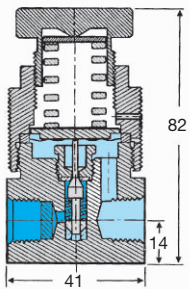
RH1

Special options add the appropriate letter

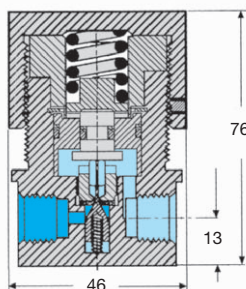
ports 1/8" NPT	in and out	only RH0	1	RH0-01 .
aluminium body		only RH0	A	RH0-02 . A
stainless steel body	316 SST	only RH0	S	RH0-02 . S
PCTFE seat		only RH0	U	RH0-02 . U
Vespel seat		only RH1	V	RH1-02 . V
NBR O-ring		only RH1	N	RH1-02 . N
FKM O-ring		only RH1	Z	RH1-02 . Z
oxygen	up to 200 bar	all	O	RH . -02 . O



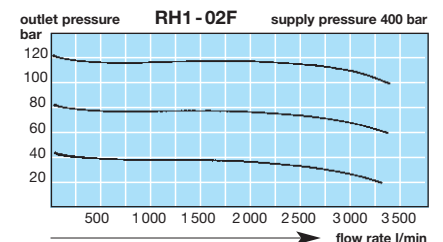
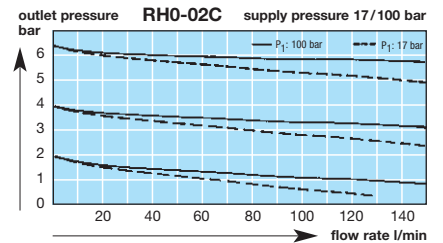
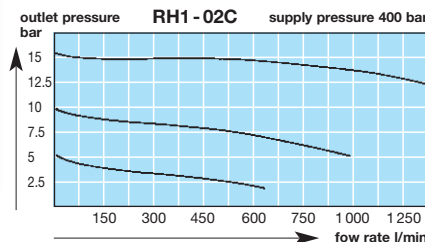
gauge ports



RH0



RH1



For your information:	1 bar: 14.5 psi	1 l/min: 0.035 scfm	1 mm: 0.039 inch
	1 psi: 0.069 bar	1 scfm: 28.3 l/min	1 inch: 25.4 mm



Order example:
 RH0-02C

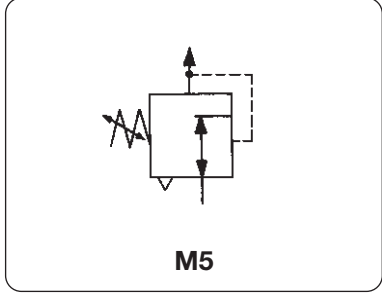
Micro Pressure Regulator

RR

Miniature



Description	Highly compact, piston-operated regulator, panel-mounted, for basic pressure regulation. for air: relieving, for water: non-relieving
Media	neutral gases, filtered, lubricated or unlubricated compressed air
Pressure regulation	by knob, with locknut
Supply pressure	max. 10 bar
Flow rate	70 l/min compressed air
Operating temperature	-20 °C to 60 °C / -4 °F to 140 °F
Storage temperature	-40 °C to 80 °C / -40 °F to 180 °F
Materials	Body: nickel-plated brass Inner valve: brass, stainless steel, NBR



M5

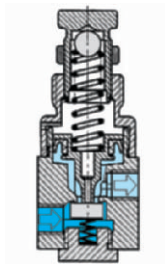
Dimensions		Flow rate	Connection thread	Pressure range	Order number
hex / Ø	height				
mm	mm	l/min*1	M5	bar	

Pressure regulator for air	supply max. 10 bar, flow rate 70 l/min without constant bleed	RR			
17	40	70	M5	0 ... 1.8 bar	RR - M5A
				0.2 ... 4 bar*2	RR - M5B
				1.0 ... 8 bar	RR - M5C



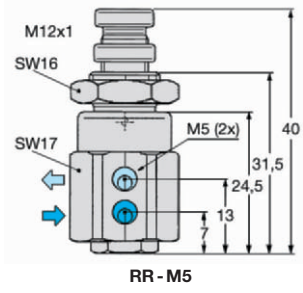
RR - M5A

Pressure regulator for water	supply max. 10 bar, flow rate 1.2 l/min without constant bleed	RR			
17	40	1,2	M5	0 ... 1.8 bar	RR - M5AK
				0.2 ... 4 bar*2	RR - M5BK
				1.0 ... 8 bar	RR - M5CK

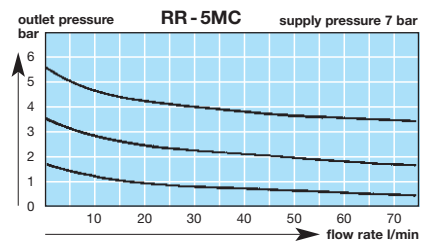


cross-section

Special options	add the appropriate letter		
for oxygen	clean	O	RR - M5 . O
panel nut	SM-RR, M12x1	P	RR - M5 . P



RR - M5



*1 at 8 bar supply pressure, 6 bar outlet pressure and Δp = 1 bar

*2 on request

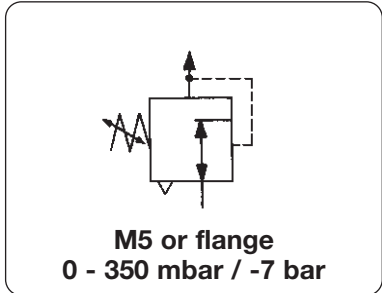
Order example: RR - M5A



Miniature Precision Pressure Regulator

RT

Description	Compact, high-precision pressure regulator for panel-mounting, ink systems, analyzing equipment and hand-held calibration devices.
Media	Neutral gases, filtered, lubricated or unlubricated compressed air
Pressure regulation	by knob, with locknut
Constant bleed	1.5 l/min at 7 bar supply pressure
Supply pressure	max. 17 bar
Flow rate	100 l/min
Operating temperature	-40 °C to 70 °C / -40 °F to 160 °F
Storage temperature	-40 °C to 90 °C / -40 °F to 190 °F
Materials	Body: anodized aluminium Inner valve: brass, stainless steel, Viton



Dimensions		Flow rate l/min**	Connection thread G	Pressure range bar	Order number
Ø mm	high mm				

Pressure regulator M5		supply max. flow rate	17 bar 100 l/min	with constant bleed	RT
25	83	100	M5	0 ... 0.35	RT - M5A
				0 ... 1.1	RT - M5B
				0 ... 2.1	RT - M5C
				0 ... 4.2	RT - M5D
				0 ... 7.0	RT - M5E



RT - M5C 25 x 86

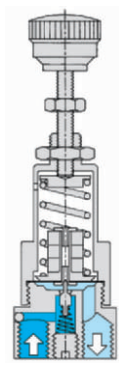
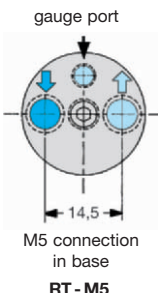
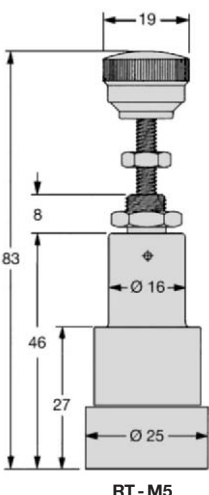
Flange regulator		supply max. flow rate	17 bar 100 l/min	with constant bleed	RT
25	83	100	Flange	0 ... 0.35	RT - MFA
				0 ... 1.1	RT - MFB
				0 ... 2.1	RT - MFC
				0 ... 4.2	RT - MFD
				0 ... 7.0	RT - MFE



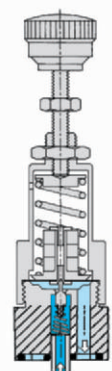
RT - MFC with flange

Special options add the appropriate letter

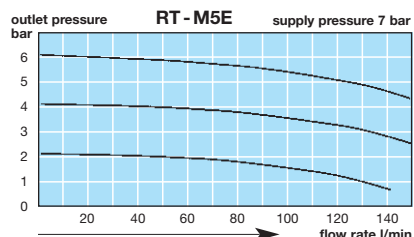
1/16" NPT	ports female	N	RT - MN.
side connection	M5 or O-Ring,	H	RT - M5 . H
mounting bracket	SA-RT	X	RT - M5 . X



RT - M5



RT - MF



** at 8 bar supply pressure, 6 bar outlet pressure and Δp = 1 bar

Order example:
RT - M5B