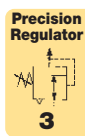
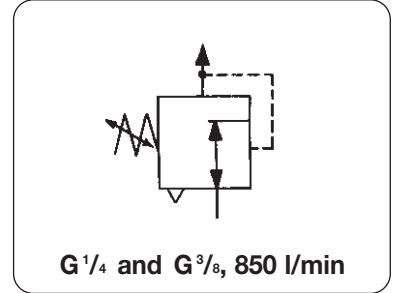


<b>Description</b>	Designed especially for low-pressure applications where minimal reduced pressure variation is required. The regulator has no constant bleed.		
<b>Adjustment</b>	T-handle or handwheel with locking nut		
<b>Relieving</b>	standard,	non relieving as option	
<b>Supply pressure</b>	max. 21 bar / 300 psi		
<b>Gauge port</b>	1/8" on the backside of body		
<b>Temperature range</b>	0 °C to 50 °C / 32 °F to 120 °F		
<b>Materials</b>	Body: zinc Spring cage: aluminium	Bottom plug: brass Inner valve: brass	Diaphragm: NBR (Buna N)



Dimensions			Adjust- ment by	K <sub>v</sub> - value (m³/h)	Flow rate		Connection thread G	Pressure range bar	Order number
A	B	C			m³/h	l/min*			

Precision pressure regulator								relieving, without constant bleed	R216
108	162	32	T-handle	0.45	48	800	G 1/4	0.01 ... 0.6	R216-02E
								0.01 ... 1.6	R216-02F
								0.01 ... 3.5	R216-02H
108	162	32	handwheel for panel mounting	0.45	48	800	G 3/8	0.01 ... 0.6	R216-03E
								0.01 ... 1.6	R216-03F
								0.01 ... 3.5	R216-03H
108	162	32	handwheel for panel mounting	0.45	48	800	G 1/4	0.01 ... 0.6	R216-02EP
								0.01 ... 1.6	R216-02FP
								0.01 ... 3.5	R216-02HP
108	162	32	handwheel for panel mounting	0.45	48	800	G 3/8	0.01 ... 0.6	R216-03EP
								0.01 ... 1.6	R216-03FP
								0.01 ... 3.5	R216-03HP

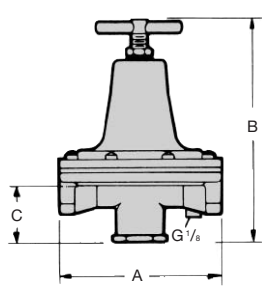


R216-02F

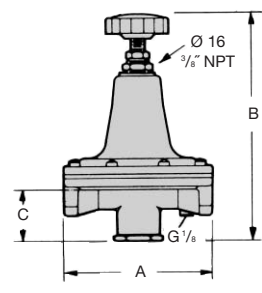
Special options		add the appropriate letter	
non-relieving		<b>K</b>	R216-0. . K
pressure gauge	Ø 63, G 1/8", loose, incl. fitting	<b>G</b>	R216-0. . G
for oxygen	clean	<b>O</b>	R216-0. . O
mount. bracket	R40-BEF	<b>X</b>	R216-0. . X



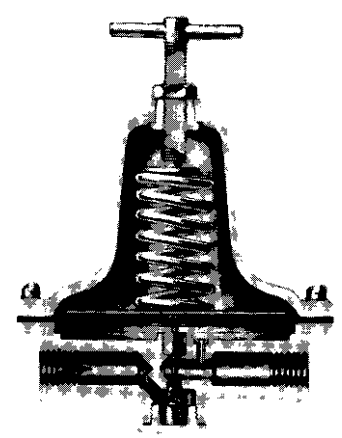
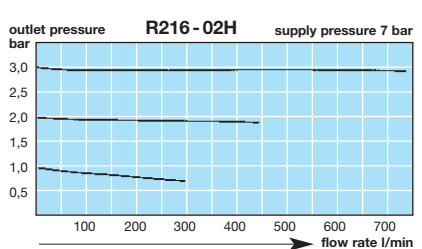
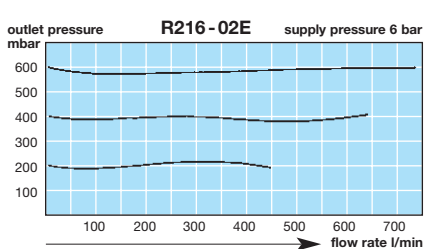
R216-02FP  
for panel mounting



R216-...



R216-...P



\* at 7 bar supply pressure and 1.4 bar outlet pressure

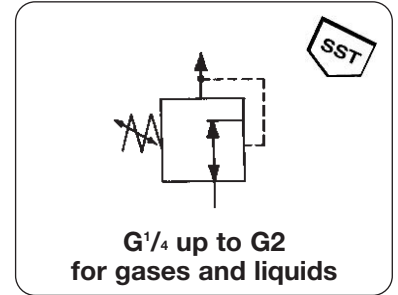
<b>For your information:</b>	1 bar: 14.8 psi	1 l/min: 0.035 scfm	1 mm: 0.039 inch
	1 psi: 0.069 bar	1 scfm: 28.3 l/min	1 inch: 25.4 mm

**Order example:**  
R216-02F

# Stainless Steel Low Pressure Regulator

R3100

<b>Description</b>	Solid-built low pressure precision regulator of stainless steel throughout. Version G <sup>1/4</sup> with stainless steel diaphragm, all others of NBR.		
<b>Media</b>	Compressed air or gases compatible with materials of construction.		
<b>Supply pressure</b>	max. 6 bar, min. 10% over setpoint pressure	<b>Mounting position:</b>	any
<b>Gauge ports</b>	1/4" on both sides of the body	<b>Non-relieving:</b>	standard, relieving as option
<b>Temperature range</b>	0 °C to 70 °C / 32 °F to 160 °F	<b>Air consumption:</b>	no constant bleed
<b>Materials</b>	Diaphragm Elastomer Body + inner valve	<b>G<sup>1/4</sup></b> SST 316 Viton SST 316	<b>G<sup>1/2</sup></b> NBR Viton SST 316  <b>G1 and G2</b> NBR Viton SST 316

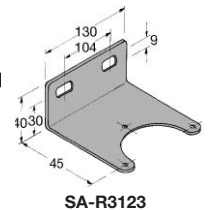
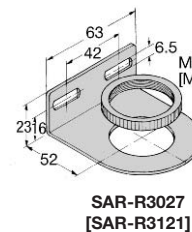
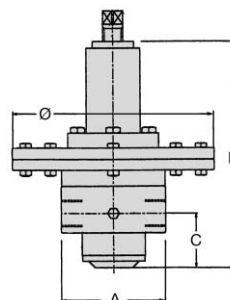
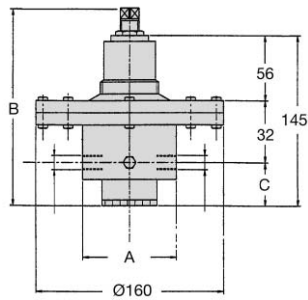
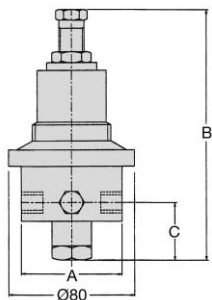
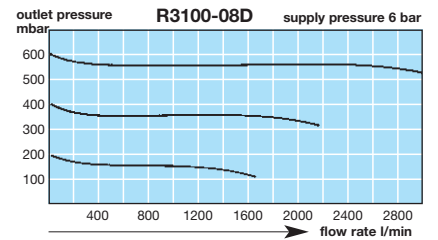
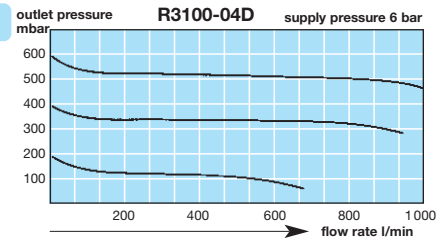


Dimensions			K <sub>v</sub> -value (m³/h)	Flow rate l/min*1	Connection thread G	Pressure range bar	Order number
A	B	C					

Low Pressure Regulator				supply pressure max. 6 bar non-relieving, for air, without gauge		R3100	
70	160	36	0.3	400	G <sup>1/4</sup>	80... 200	R3100-02C
						180... 1200	R3100-02E
80	170	37	0.4	600	G <sup>1/2</sup> *2	5... 45	R3100-04B
						20... 200	R3100-04C
						150... 700	R3100-04D
125	275	66	1.8	3000	G1	20... 50	R3100-08A
						50... 100	R3100-08B
						100... 700	R3100-08D
						700... 6000	R3100-08G
200	355	90	5.7	8000	G2	20... 50	R3100-16A
					R3100-12.	50... 150	R3100-16B
					for G <sup>1/2</sup>	150... 300	R3100-16D
						300... 3000	R3100-16G



Special options		add the appropriate letter or number	
pressure gauge	stainless steel, rearside, mbar-range	<b>G</b>	R3100 - ... <b>G</b>
acetylene	C <sub>2</sub> H <sub>2</sub> : <b>19</b>	argon Ar: <b>05</b>	helium He: <b>09</b>
carbon dioxide	CO <sub>2</sub> : <b>03</b>	methane CH <sub>4</sub> : <b>13</b>	propane C <sub>3</sub> H <sub>8</sub> : <b>16</b>
oxygen	O <sub>2</sub> : <b>15</b>	nitrogen N <sub>2</sub> : <b>07</b>	hydrogen H <sub>2</sub> : <b>11</b>
mounting bracket + nut	SAR-R3121	for G <sup>1/4</sup> and G <sup>1/2</sup>	<b>X</b>
mounting bracket	SA - R3123 on the body	for G1	<b>X</b>
mounting nut	SM-R3121	for G <sup>1/4</sup> and G <sup>1/2</sup>	<b>Q</b>



\*1 at supply pressure 6 bar

\*2 outlet port G<sup>3/4</sup>

<b>For your information:</b>	1 bar: 14.5 psi 1 psi: 0.069 bar	1 l/min: 0.035 scfm 1 scfm: 28.3 l/min	1 mm: 0.039 inch 1 inch: 25.4 mm	Pressure gauge: see end of chapter
------------------------------	-------------------------------------	---	-------------------------------------	---------------------------------------

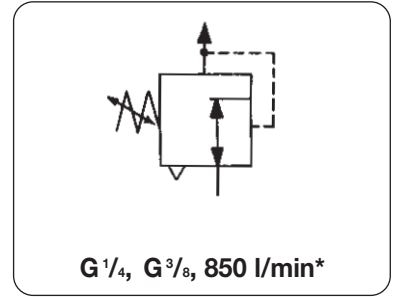


**Order example:**  
R3100-02C

# Precision Pressure Regulator, 800 l/min

R300

<b>Description</b>	Precision pressure regulator designed for systems requiring precision control in restricted spaces. Combines excellent sensitivity and high flow capacity as ideal solution for precise control of paper and textile machinery or cylinder supply pressures.	
<b>Media</b>	Air or dry gases, oil-free and filtered to over 25 µm	
<b>Supply pressure</b>	max. 18 bar / 250 psi	
<b>Flow capacity</b>	900 l/min / 30 scfm at 7 bar / 100 psi supply and 1.4 bar / 20 psi set pressure	
<b>Exhaust capacity</b>	55 l/min / 2 scfm at 0.35 bar / 5 psi above set pressure	
<b>Air consumption</b>	1 to 3 l/min / 0.03 scfm to 0.09 scfm, < 1% of max. flow capacity	
<b>Temperature range</b>	-20 °C to 70 °C / -4 °F to 160 °F	<b>Sensitivity:</b> 0.6 mbar / 1/4" W.C.
<b>Materials</b>	Body: aluminium die-casting Inner valve: stainless steel, brass, zinc-plated steel	Diaphragm: NBR (Buna N) and Dacron Viton and silicone as option

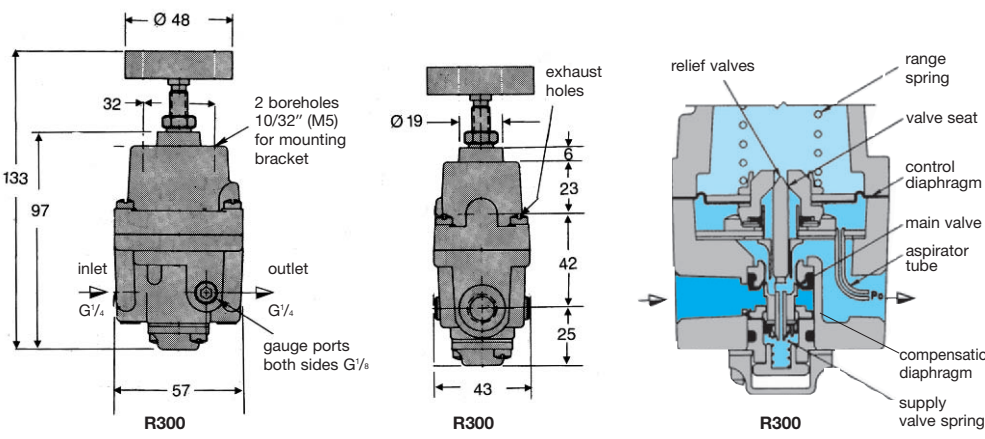
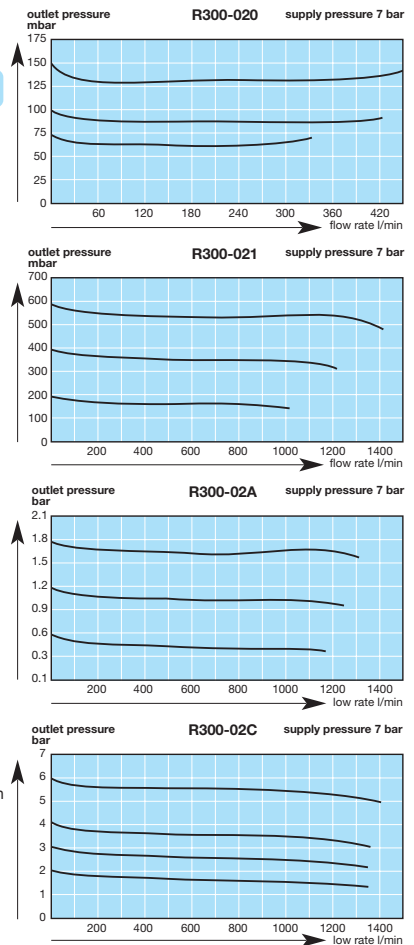


Dimensions			Flow rate	Connection thread	Pressure range	Order number
H	W	D				
mm	mm	mm	l/min*1	G	bar*2	

Precision pressure regulator			supply max. 18 bar, constant bleed,	exhaust 55 l/min K <sub>v</sub> = 0.48 (m³/h)	R300	
133	57	43	900	G 1/4	0.001...0.14 bar	<b>R300-020</b>
					0.01 ...0.7 bar	<b>R300-021</b>
					0.03 ...2 bar	<b>R300-02A</b>
					0.07 ...4 bar	<b>R300-02B</b>
					0.14 ...7 bar	<b>R300-02C</b>
133	57	43	950	G 3/8	0.001...0.14 bar	<b>R300-030</b>
					0.01 ...0.7 bar	<b>R300-031</b>
					0.03 ...2 bar	<b>R300-03A</b>
					0.07 ...4 bar	<b>R300-03B</b>
					0.14 ...7 bar	<b>R300-03C</b>
			0.14 ...14 bar	<b>R300-03D</b>		



Special options	add the appropriate letter	Accessories
without constant bleed	non-relieving, low flow	<b>K</b> R300-0..K
low flow rates	with constant bleed	<b>L</b> R300-0..L
Viton diaphragm	FPM	<b>V</b> R300-0..V
silicone diaphragm	MVQ	<b>S</b> R300-0..S
NPT thread		<b>N</b> R300-0..N
mounting bracket	SAR300, mounted on front	<b>X</b> R300-0..X
tamper-proof cap	EA-12165	<b>T</b> R300-0..T



\*1 at 7 bar supply pressure and 1.4 bar outlet pressure  
\*2 lowest setpoint recommended at 2 bar supply pressure

<b>For your information:</b>	1 bar: 14.8 psi	1 l/min: 0.035 scfm	1 mm: 0.039 inch
	1 psi: 0.069 bar	1 scfm: 28.3 l/min	1 inch: 25.4 mm

**Order example:**  
**R300-02C**