

## 2/2-way-valves DN 8 to DN 12

for neutral gaseous and liquid fluids  
pressure actuated by external fluid  
Diaphragm valves  
Internal threads G 1/4 to G 1/2  
Operating pressure -0,9 to 6 bar

### Description (standard valve)

Valve for neutral gaseous and liquid fluids  
up max. 80 mm<sup>2</sup>/s (cSt)

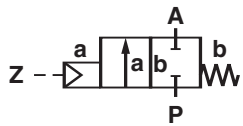
Flow direction:	determined
Mounting position:	optional
Flow fluid range	
Fluid temperature:	max. +90 °C
Ambient temperature:	max. +50 °C
Material Body:	Brass
Seat seal:	NBR reinforced fabric diaphragm
Pilot fluid range:	
Pilot fluid:	air, water, hydraulic oil
Fluid temperature:	max. +90 °C
Material Body:	Brass, PPO (cover)
Seat:	NBR reinforced fabric diaphragm
Pilot connection:	G 1/8



### Features

- Spindle packing with diaphragm
- Suitable for contaminated flow fluids
- Optical position indicator standard

### Symbol



### Ordering information

To order, quote model number from table overleaf, e. g. 8271000.0000 for a G 1/4 valve

### Characteristic data

See page 2 valve and solenoid informations

Detmolder Strasse 256  
D-32545 Bad Oeynhausen

PO Box 10 02 52-53  
D-32502 Bad Oeynhausen

Phone ++49 5731 / 791-0  
Fax ++49 5731 / 791-179

<http://www.buschjost.com>  
mail@buschjost.de

**Characteristic data  
valves**

Part Number	Nominal Diameter (mm)	Port size	Operating pressure *		Pilot pressure **		kv-value *** (Base m <sup>3</sup> /h)	Weight (kg)
			min	max (bar)	min	max (bar)		
8271000.0000	8	G 1/4	-0,9	6	3	8	1,90	0,75
8271100.0000	10	G 3/8	-0,9	6	3	8	2,40	0,72
8271200.0000	12	G 1/2	-0,9	6	3	8	2,90	0,70

\* with gaseous and liquid fluids up to 80 mm<sup>2</sup>/s(cSt)

\*\* for vacuum inset min. pilot pressure 4 bar

\*\*\* C<sub>v</sub>-value (US) ≈ kv-value x 1,2

**Note:** Stainless steel design for number 50,51

**Stainless Steel**

**Options (valves)**

XXXXX01.XXXX Normally Open  
 XXXXX03.XXXX Seat seal FPM,  
 FPM-fabric-diaphragm (Pos. 102),  
 max fluid temperature +110 °C  
 XXXXX14.XXXX Seat seal EPDM,  
 EPDM-fabric-diaphragm (Pos. 102)  
 XXXXX50.XXXX only for connection G 3/8 and G 1/2:  
 Valve body stainless steel,  
 internal parts stainless steel,  
 Sandvik 1802

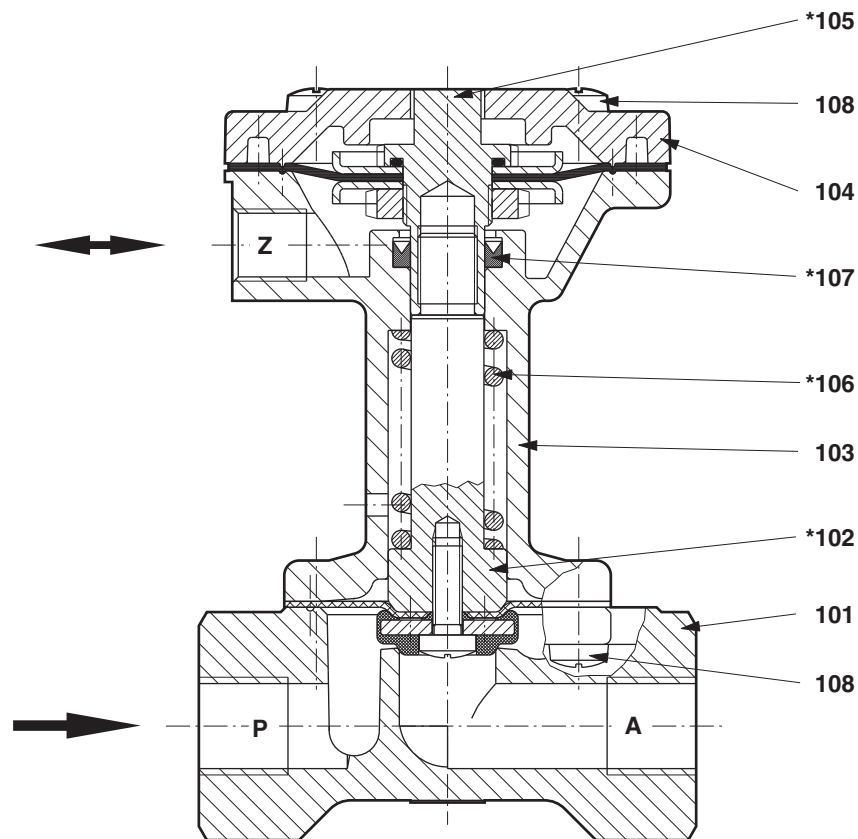
XXXXX51.XXXX only for connection G 3/8 and G 1/2:  
 Seat seal FPM,  
 FPM-fabric-diaphragm (Pos. 102),  
 valve body stainless steel,  
 internal parts stainless steel,  
 Sandvik 1802,  
 max fluid temperature +110 °C

On Request Further versions

A 3/2 way solenoid pilot valve can be fitted at the pilot connection Z. These pilot valves are only for air, look at publication D111402.XX.XX.

Required parts	Cat no
1 pc. 3/2-way-solenoid valve DN 1.6	8466053.910X

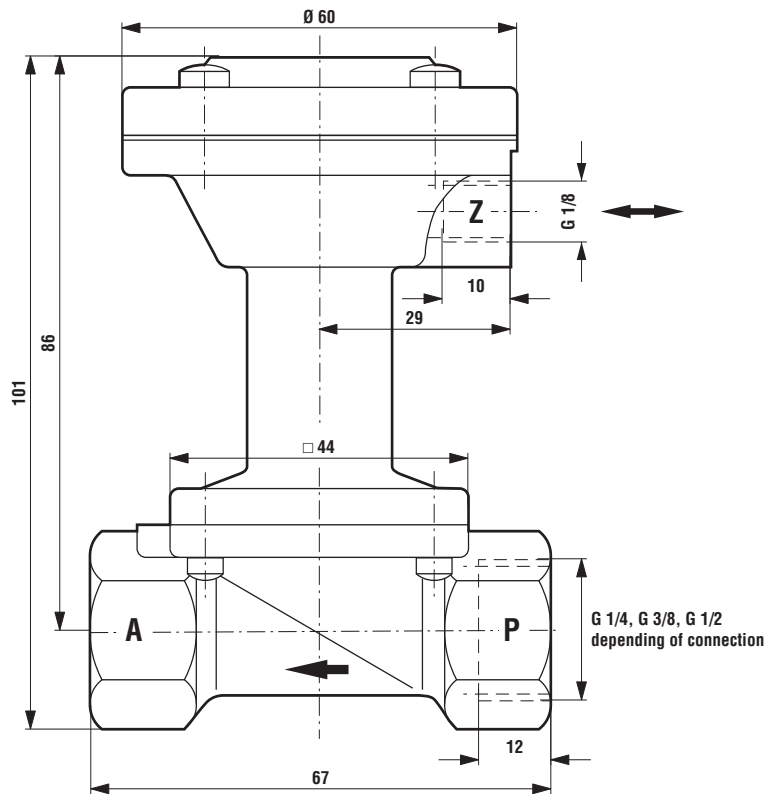
## Section



- 101 Valve body
- 102 Valve plate
- 103 Actuator housing
- 104 Actuator housing cover
- \*105 Diaphragm
- \*106 Pressure spring
- \*107 Grooved ring
- \*108 Oval head cap screw

\*These individual parts form a complete wearing unit.  
When ordering spare parts state Cat No and Series No.

Dimensions



**Note to Pressure Equipment Directive (PED):**

The valves of this series are according to Art. 3 § 3 of the Pressure Equipment Directive (PED) 97/23/EG.

This means interpretation and production are in accordance to engineers practice wellknown in the member countries. A certificate of conformity ist not designated.